

# 31 CARTAGENA INTERNATIONAL ARCHITECTURE WORKSHOP

TEXTURES + SKIN +  
CONTRASTS

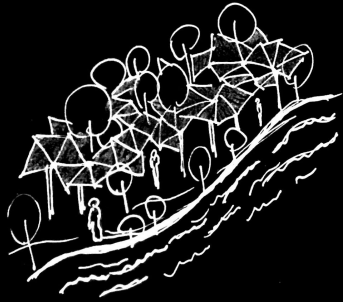
ANA MARIELL PINTO  
CAMILA MUÑOZ  
NICOLE PIECHA  
HAO QIN

GROUP #9

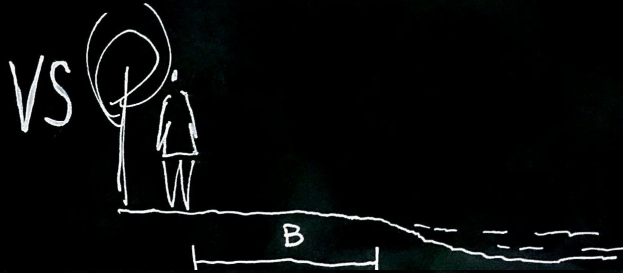


# IDEA / ARCHITECTURAL INTERVENTION

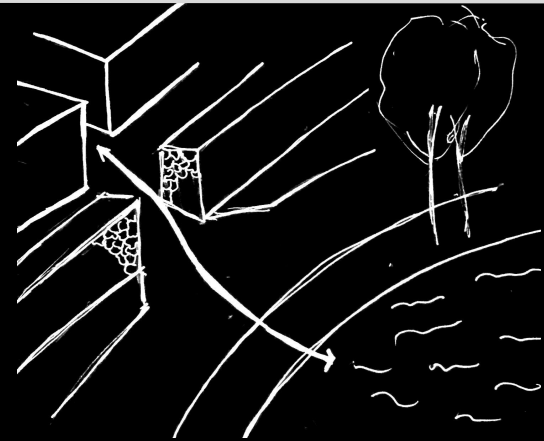
GIVES SHADOW  
AND PROVIDES A  
PLACE TO PLAY  
BESIDE THE WATER



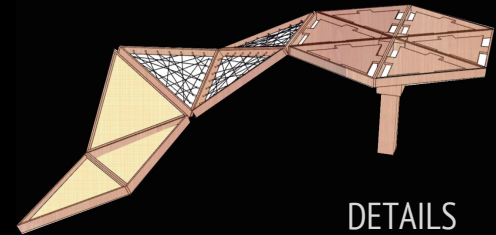
VS



Opportunity play with water  $A > B$

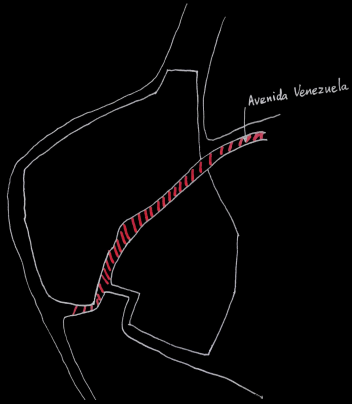


RELATION BETWEEN SPACES  
INSIDE THE WALL AND WATER

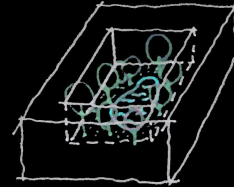


DETAILS

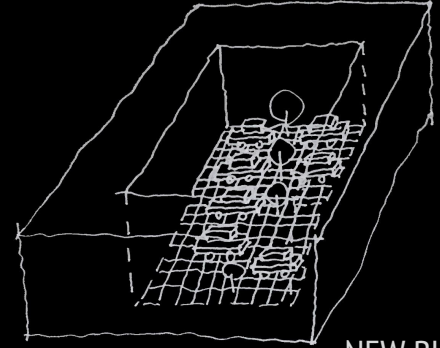
# JUST TO PLAY



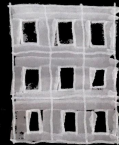
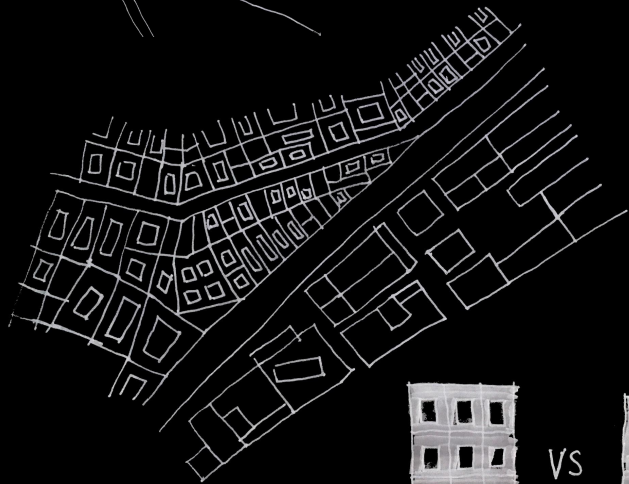
DIFFERENT URBAN  
TEXTURES BETWEEN TWO  
SIDES OF VENEZUELA  
AVENUE



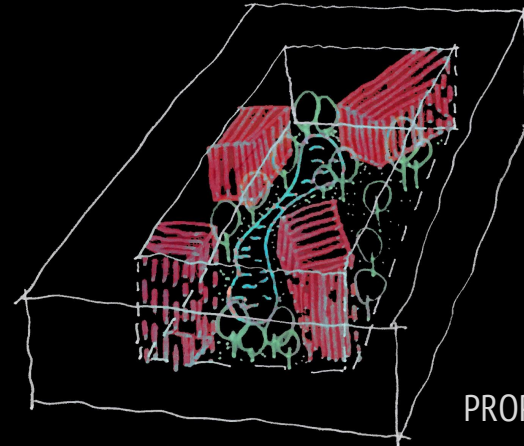
OLD BUILDINGS



NEW BUILDINGS

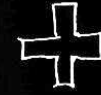
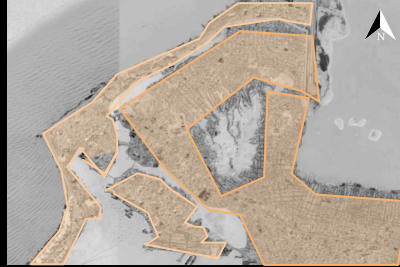


VS

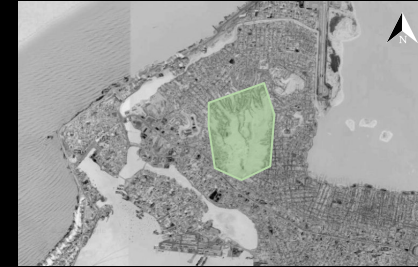


PROPOSAL

Urban Expansion



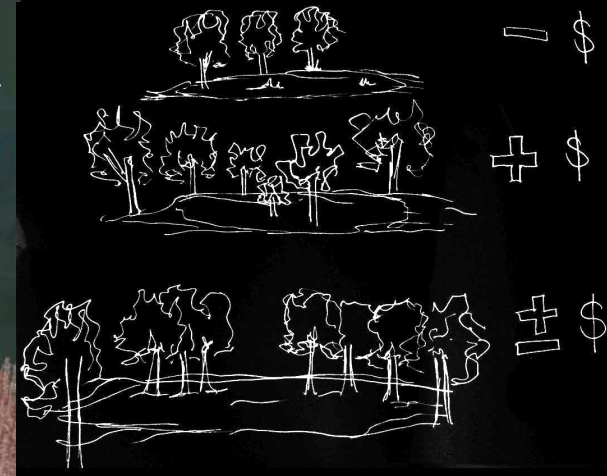
Green areas extension



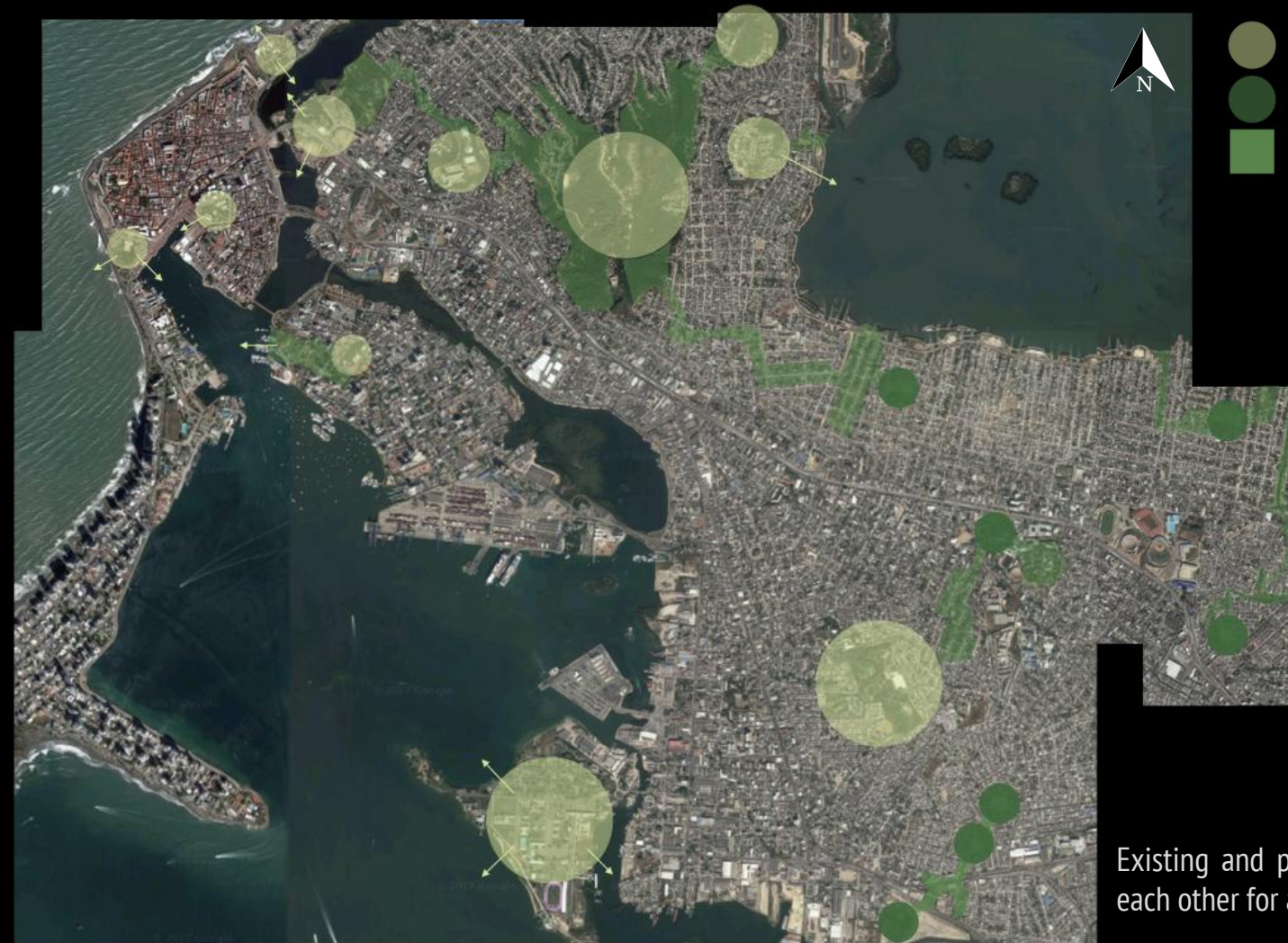
- IDENTIFY THE ARID PLACES AND THE ONES FULL OF GREEN.
- CHOOSE A KEY LOCATION FOR RECREATION AREAS.
- WITH CHANEL'S SUPPLY THE ARID ZONES.
- GIVE A GREEN LUNG TO THE OUTSIDE CITY.
- CREATE DIFFERENT AERIAL TEXTURES SO WE CAN MAKE THE SATELITAL LANDSCAPE MORE EVEN.



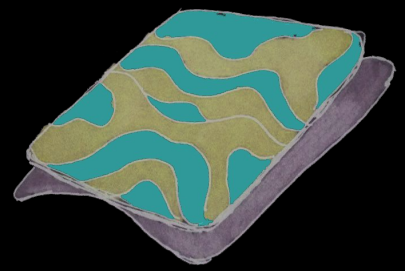
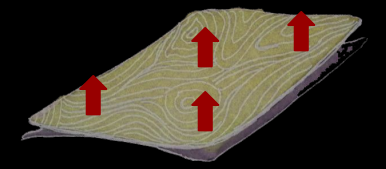




- Low economic level/ low green areas
- Low economic level /medium green areas
- High economic level / medium green areas
- Medium economic level / Many green areas



- Existing green nodes
- Proposed green nodes
- Connections between water and green areas



Existing and proposed green nodes connected to each other for a better relationship to the city.

**“THANK YOU”**